

# GRAVESEND TOWN CENTRE REGENERATION PLANS

Reef Group are pleased to announce that it will be bringing forward new redevelopment proposals for Gravesend Town Centre, in partnership with Gravesham Council.

Formerly known as the Gravesend Heritage Quarter Project, Reef Group have revised their proposals for these exciting town centre development sites.

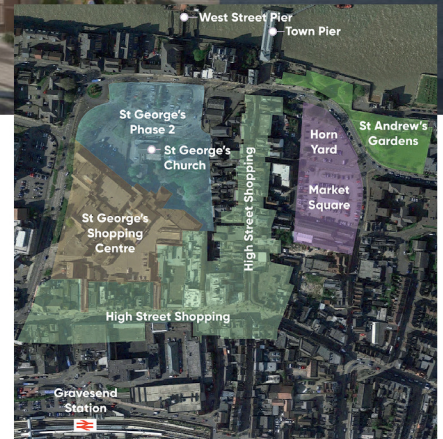
This community newsletter has been produced to update you on the proposals, and to invite you to the upcoming public consultations, where you can view the plans and have your say.

## WHAT ARE THE PROPOSALS?

This exciting town centre regeneration project consists of three key parts:

- St George's Phase 1** Reef's application for upgrades and refurbishments to the Centre was approved in December 2017 and work has been carried out since. This included new signage, branding, street furniture and shopfront improvements creating a more accessible and user-friendly shopping centre.

- Market Square & Horn Yard** Formerly known as the 'Eastern Quarter', the redevelopment of these town centre car park sites will deliver much-needed new homes based on the affordable Build-to-Rent model, ideal for people looking to live in central Gravesend, as well as public and private car parking. A planning application is to be submitted in due course.
- St George's Phase 2** Formerly known as the 'Western Quarter', these plans focus around the setting of St George's Church and will see the delivery of new homes, office accommodation, a cinema, a hotel, restaurants and community space.



## WHO ARE REEF GROUP?

Reef Group are a property development and investment company that specialise in mixed-use urban regeneration projects.

Reef deliver high-quality and innovative development projects and have experience across a variety of sectors including retail, residential, offices, hotels and leisure, as well as growing sectors such as student housing and care homes.

Reef have been working in partnership with Gravesham Council since spring 2018 to deliver the successful town centre regeneration, with the aim of bringing new life and activity to the centre of Gravesend.



**FOR MORE INFORMATION:**  
[WWW.REEFGROUP.CO.UK](http://WWW.REEFGROUP.CO.UK)



## These exciting plans will deliver



**Homes**



**Offices and workspace**



**New restaurants and cafés**



**A cinema**



**A hotel**



**Community space**



**Improved public open space**

## Public Consultation

We will be holding two public consultation events to get your feedback on our exciting new proposals before we submit our application.

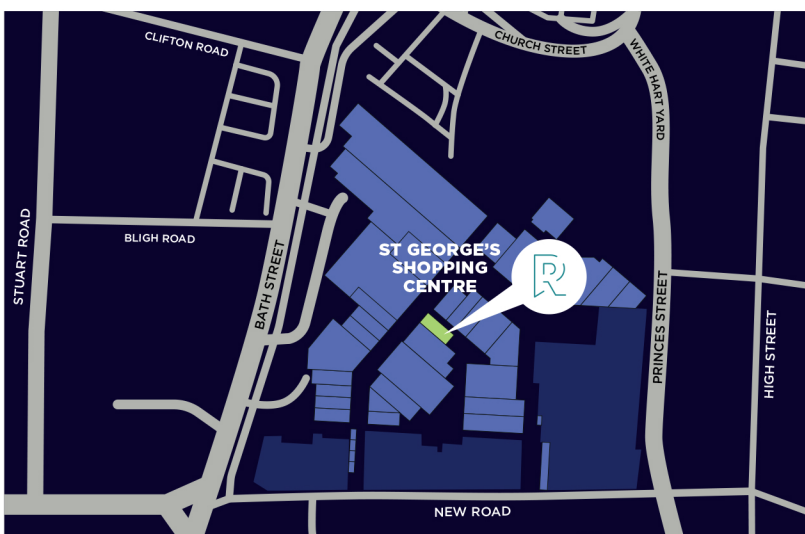
**VENUE:** Unit 14, St George's Shopping Centre, Bath Street, Gravesend, DA11 0TA

**EVENT 1:** Thursday 23rd January, 12noon – 4pm

**EVENT 2:** Saturday 25th January, 10am – 1pm

You can drop in at any time during the times stated. Members of the project team will be on hand to answer your questions. We look forward to meeting you and hearing your views.

### MAP TO VENUE



### CONTACT US:

If you have any questions about the project or would like to register for updates, you can contact the project team via:

#### PHONE:

0344 225 0003

#### EMAIL:

gravesendtowncentre  
@glhearn.com

#### WEB:

www.gravesend-town-centre-regen.com

#### POST:

Freepost RTZS-BLHZ-EUXC,  
GL Hearn, 65 Gresham Street,  
London, EC2V 7NQ